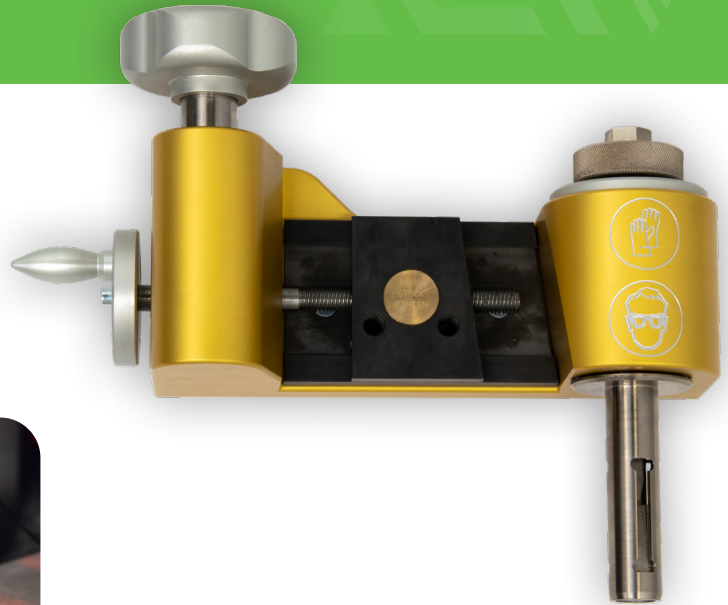


Technical Data

MiniFacer ONE

The Sygma™ MiniFacer ONE is the flagship model of the MiniFacer series as it was the first manual driven tool to face different types and diameters of flanges on the market.



Operational Data

| | Min | Max |
|-------------------------|-------------------|------------------|
| Internal Clamp Capacity | Ø 25mm Ø 1" | Ø 252mm Ø 10" |
| Facing Diameter | Ø 30mm Ø 1,25" | Ø 350mm Ø 14" |

Dimensional Data

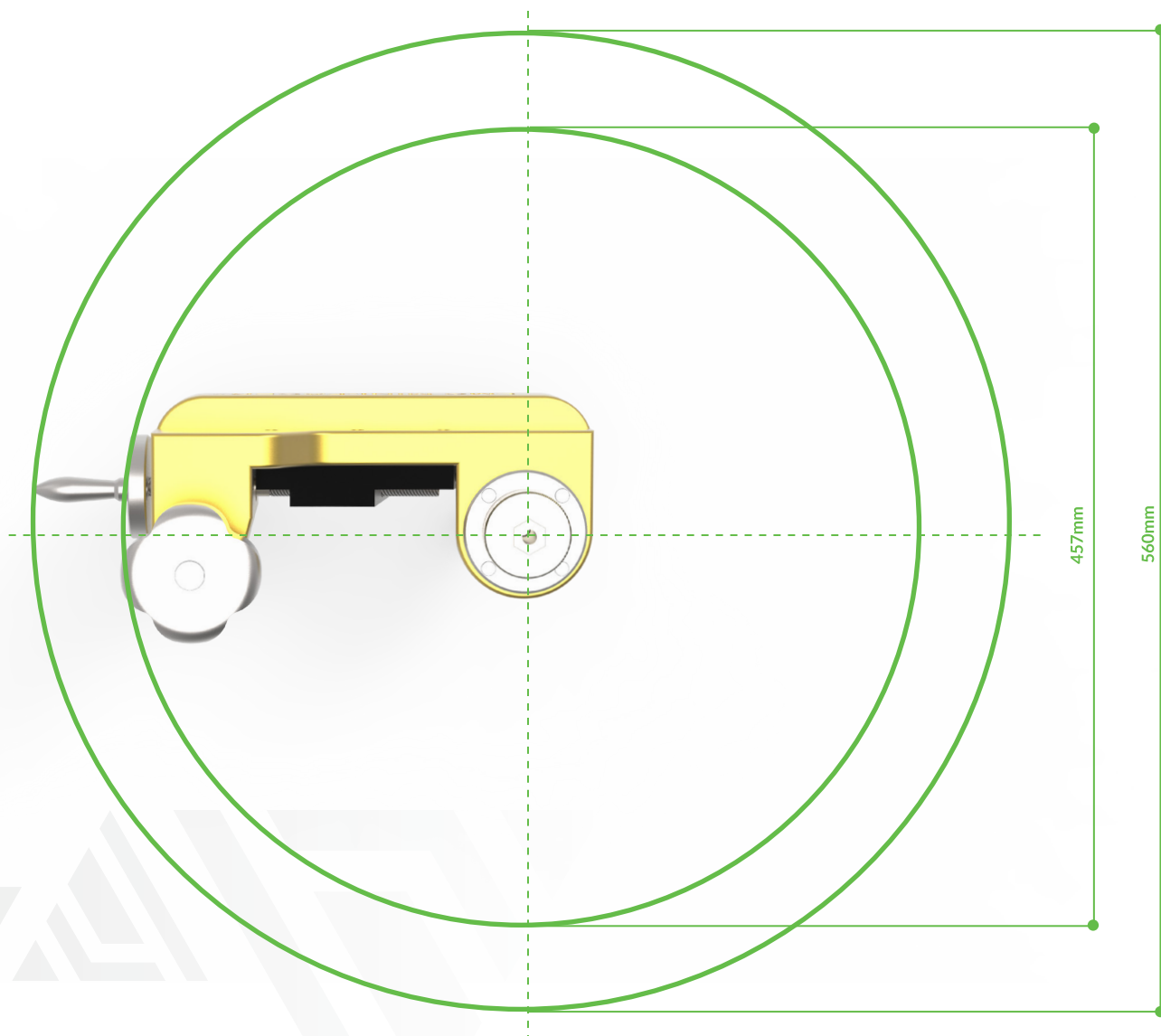
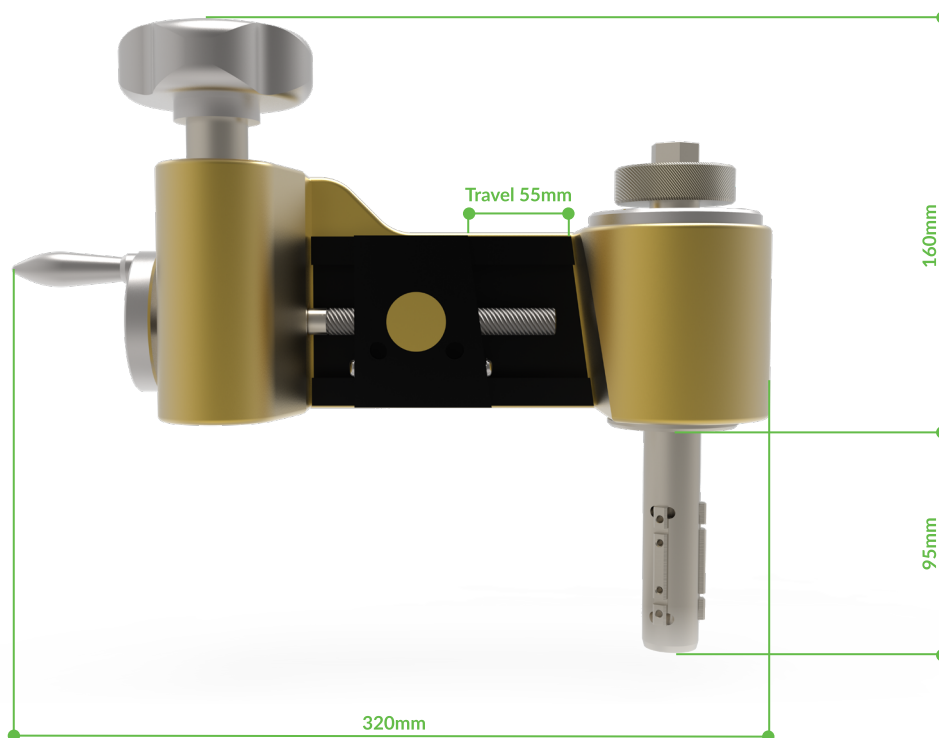
| | |
|---------------------------------|-----------------|
| Case Dimensions | 55 x 45 x 21 cm |
| Total Case Weight | 15kg |
| MiniFacer Weight (ready to use) | 7kg |
| Overall Length Machine | 340mm / 13,5" |
| Height from Flange Face | 200mm / 8" |
| Min. Swing Diameter | Ø 460mm / 18" |

Completed With:

- ✔ Toolkit
- ✔ Mounting Clamps
- ✔ Case
- ✔ CE Certificate
- ✔ Screws
- ✔ Manual



Dimensional Data



Case Content



1. LMC MiniFacer Tool

2. 1 set of double sided cutting tips

3. Spanner 10mm

4. Spanner 19mm

5. Plastic box with bolts and springs

6. Slide chart

7. Allen Key 8

8. Allen Key 2

9. Complete set of clamping gibs

10. Plastic hammer

11. Toolpost

12. Cutting tool extended left

13. Cutting tool neutral

14. Cutting tool extended right

15. Spindle smooth finish

Technical Data

MiniFacer EVO

The Sygma™ MiniFacer EVO is the Big Brother of the MiniFacer ONE. The Tool is perfect for the larger flanges. Equipped with an adjustable base for increased precision, the Sygma™ MiniFacer EVO forms an essential asset in your machine fleet.



Operational Data

| | Min | Max |
|--------------------------------|-----------------|------------------|
| Internal Clamp Capacity Collet | Ø 48mm Ø 2" | Ø 240mm Ø 9" |
| Internal Clamp Capacity Base | Ø 146mm Ø 6" | Ø 466mm Ø 18" |
| Facing Diameter | Ø 48mm Ø 2" | Ø 610mm Ø 24" |

Dimensional Data

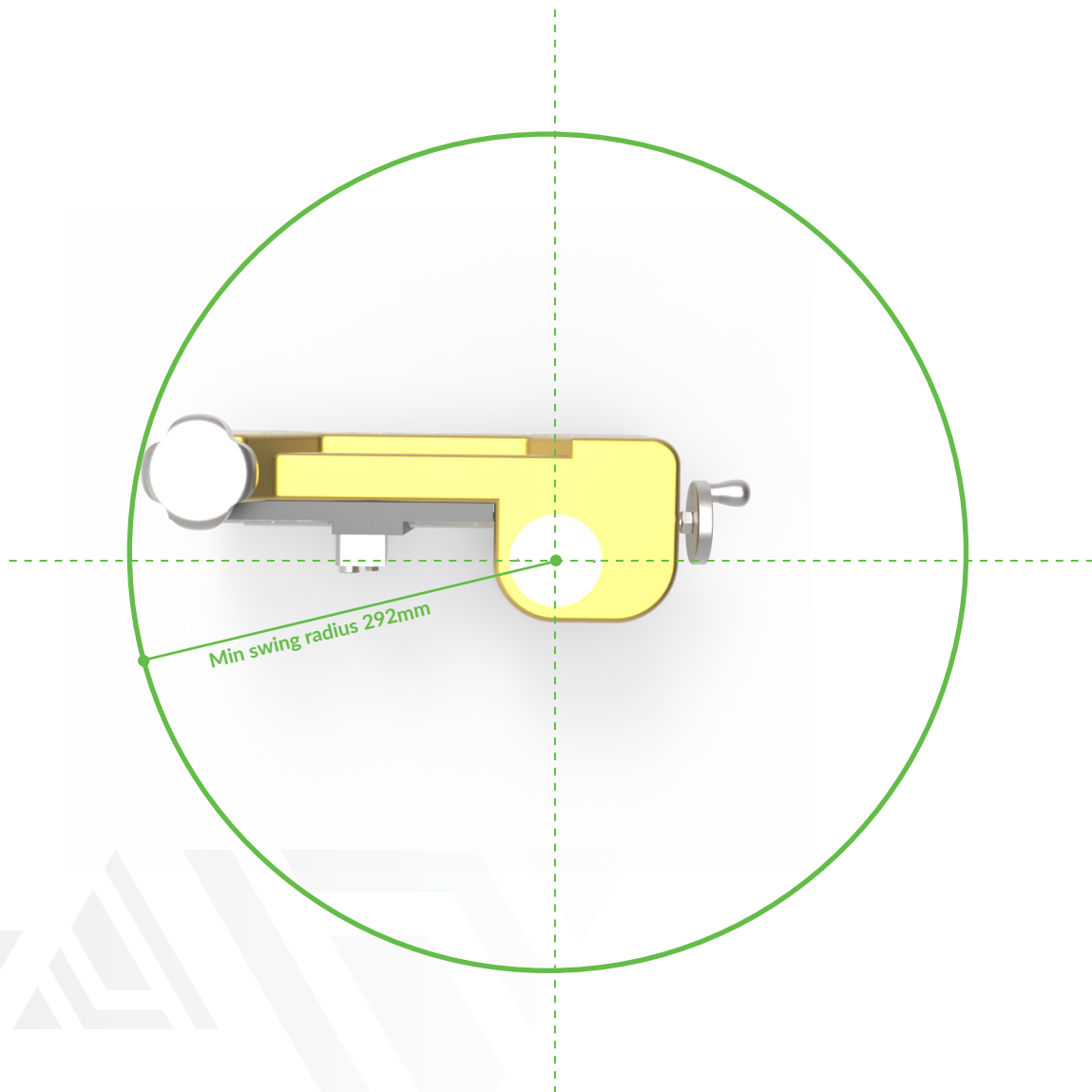
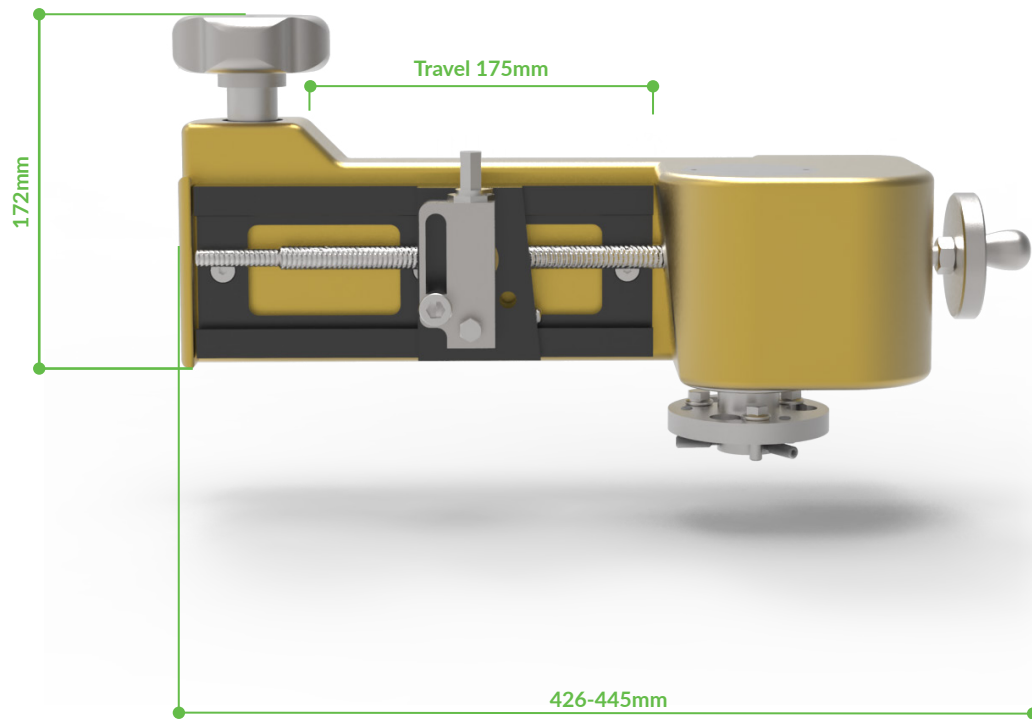
| | |
|---------------------------------|-----------------|
| Case Dimensions | 67 x 52 x 39 cm |
| Total Case Weight | 34kg |
| MiniFacer Weight (ready to use) | 9kg |
| Overall Length Machine | 425mm / 17" |
| Height from Flange Face | 200mm / 8" |
| Min. Swing Diameter | Ø 590mm / 23" |

Completed With:

- Toolkit
- Case
- Screws
- Mounting Clamps
- CE Certificate
- Manual



Dimensional Data



Case Content

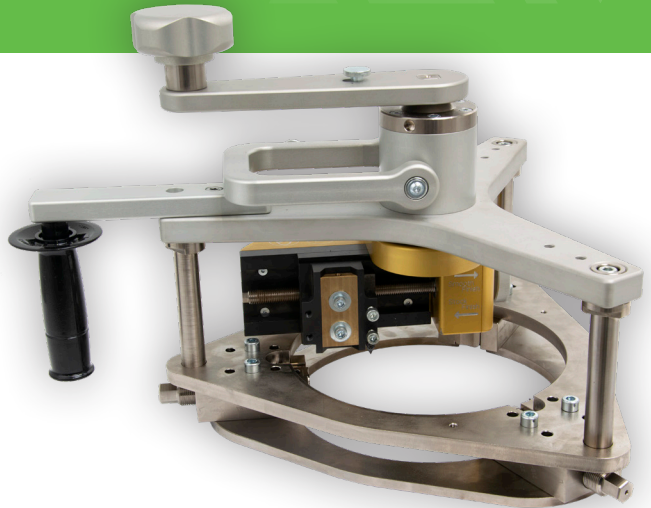


1. Body
2. Complete set of clamping gibs
3. Plastic hammer
4. Collet
5. Toolholder assy
6. Tool Straight
7. Tool 90° (RH)
8. Tool 90° (LH)
9. Cutting tips
10. Allen Keys 2mm & 3mm
11. Allen Keys 5mm & 8mm
12. Ring Spanner 19mm
13. Ring Spanner 10mm
14. Base
15. Complete set of clamping feet
16. Feet extensions
17. Adjustable feet
18. Setting bar
19. Counterweight
20. Counterweight rail
21. Slide chart
22. Feeler gauge
23. MKM (Dial gauge)

Technical Data

MiniFacer OD

The Sygma MiniFacer OD is our latest development within our manual flange facers range. It is the first manual flange facer with an outside diameter clamping system. It is the first manual flange facer with an outside diameter clamping system. Its unique and robust design makes it possible to quickly and easily machine different flange types in a wide range of industries.



Operational Data

| | Min | Max |
|-------------------------|------------------|--------------------|
| External Clamp Capacity | Ø 65mm Ø 2,5" | Ø 350mm Ø 13,5" |
| Facing Diameter | Ø 0mm Ø 0" | Ø 350mm Ø 13,5" |

Dimentional Data

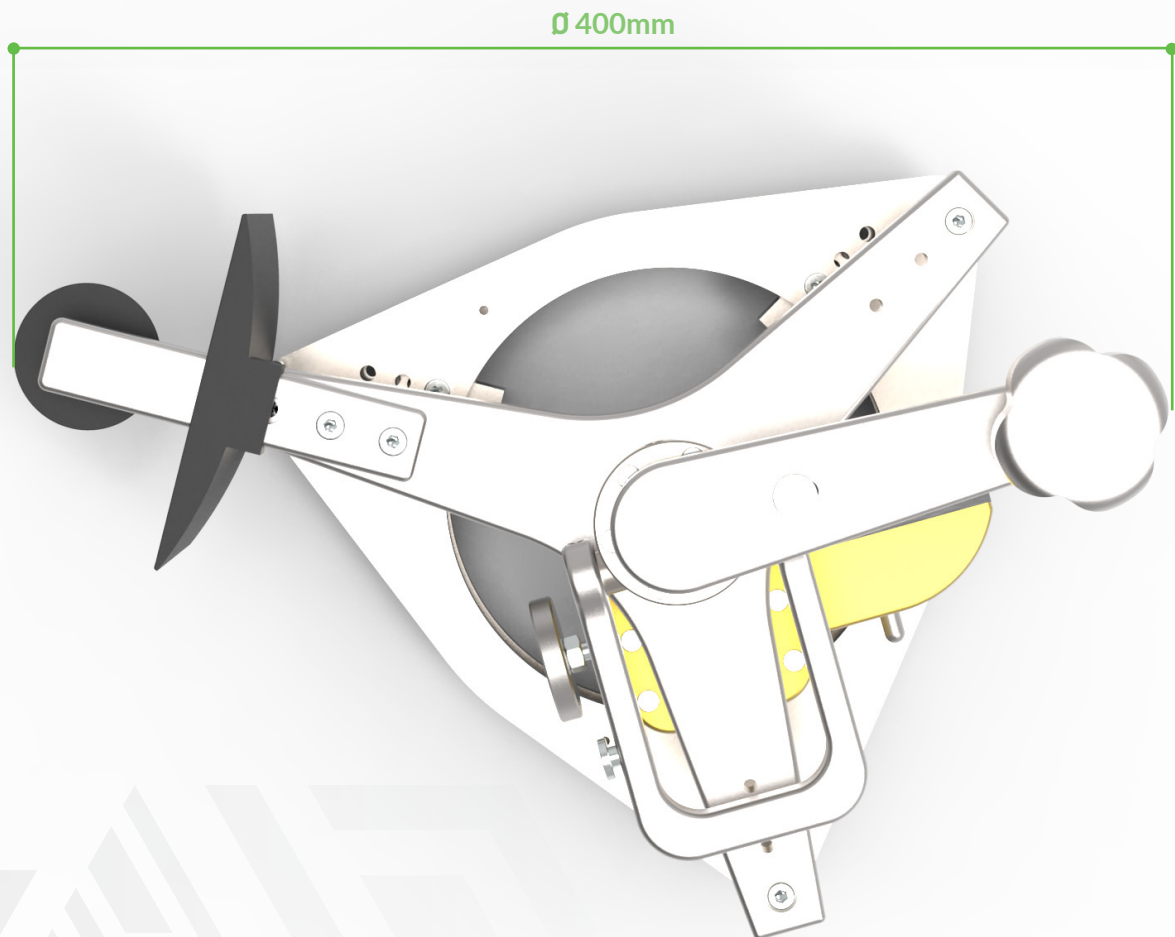
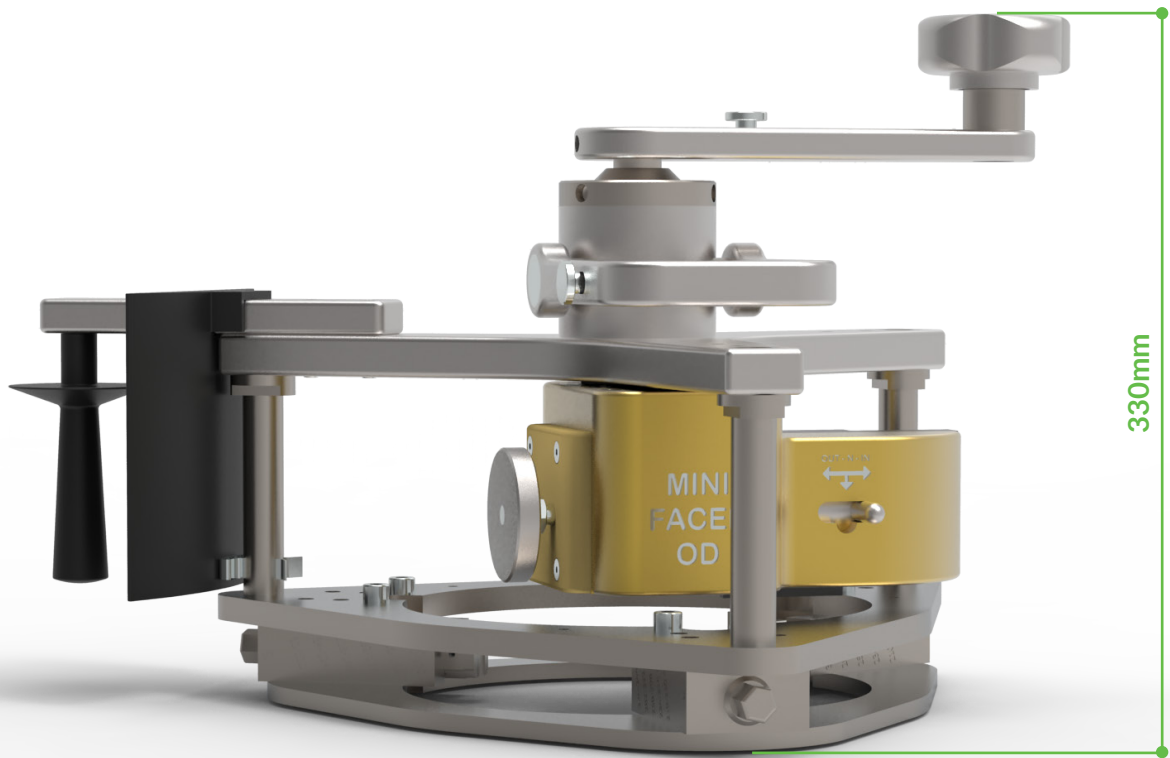
| | |
|---------------------------------|-----------------|
| Case Dimensions | 67 x 52 x 39 cm |
| Total Case Weight | 40kg |
| MiniFacer Weight (ready to use) | 10kg |
| Overall Length Machine | 240mm / 9,5" |
| Height from Flange Face | 300mm / 12" |
| Min. Swing Diameter | Ø 300mm / 12" |

Completed With:

- Toolkit
- Mounting Clamps
- Case
- CE Certificate
- Screws
- Manual



Dimensional Data



Case Content



1. MiniFacer OD
2. Clamping Ring Small
3. Clamping Ring Large
4. Bar for Safety Handle
5. Clamping Feet
6. Handle for Turning MiniFacer OD
7. Safety Cap
8. Box With Hand Tools
9. Dial Gauge
10. Safety Handle

Plastic box with hand tools

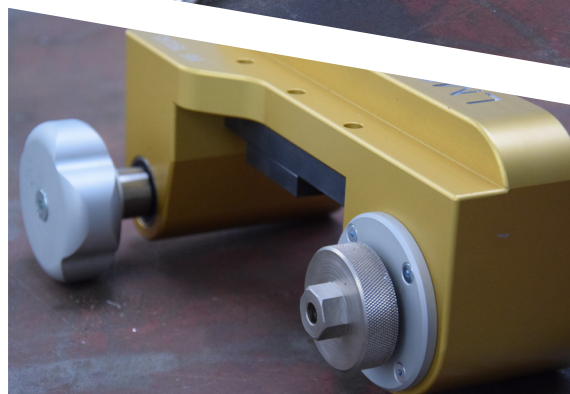
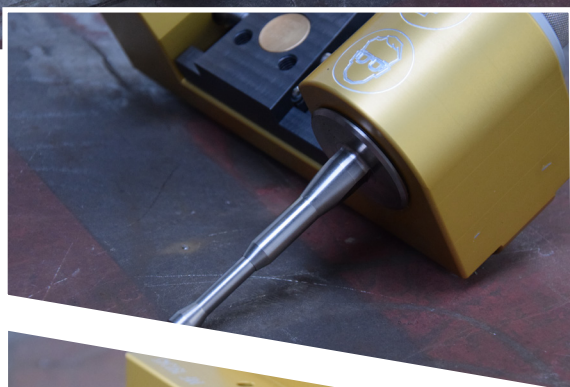
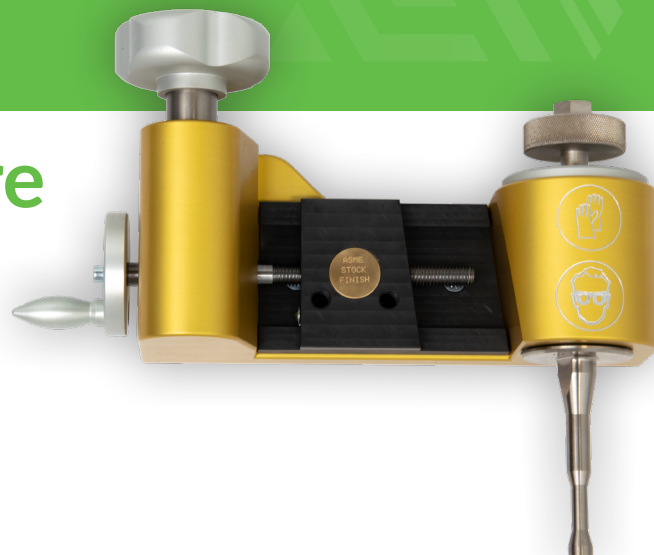


1. Cutting tip holders N + 90° LH
2. Bolts for mounting clamping ring
3. Allen Key with T grip 5mm
4. Socket for square drive 15mm
5. Allen bit for square drive 6mm
6. Square drive with handle

Technical Data

MiniFacer Small Bore

The MiniFacer SB has been specially developed to fit flanges with a smaller clamping capability. The simplified clamping system ensures that you have refaced flanges in no time.



Operational Data

| | Min | Max |
|-------------------------|---------------------|---------------------|
| Internal Clamp Capacity | Ø 13,5mm Ø 0,53" | Ø 30,5mm Ø 1,18" |
| Facing Diameter | Ø 13,5mm Ø 0,53" | Ø 350mm Ø 14" |

Dimensional Data

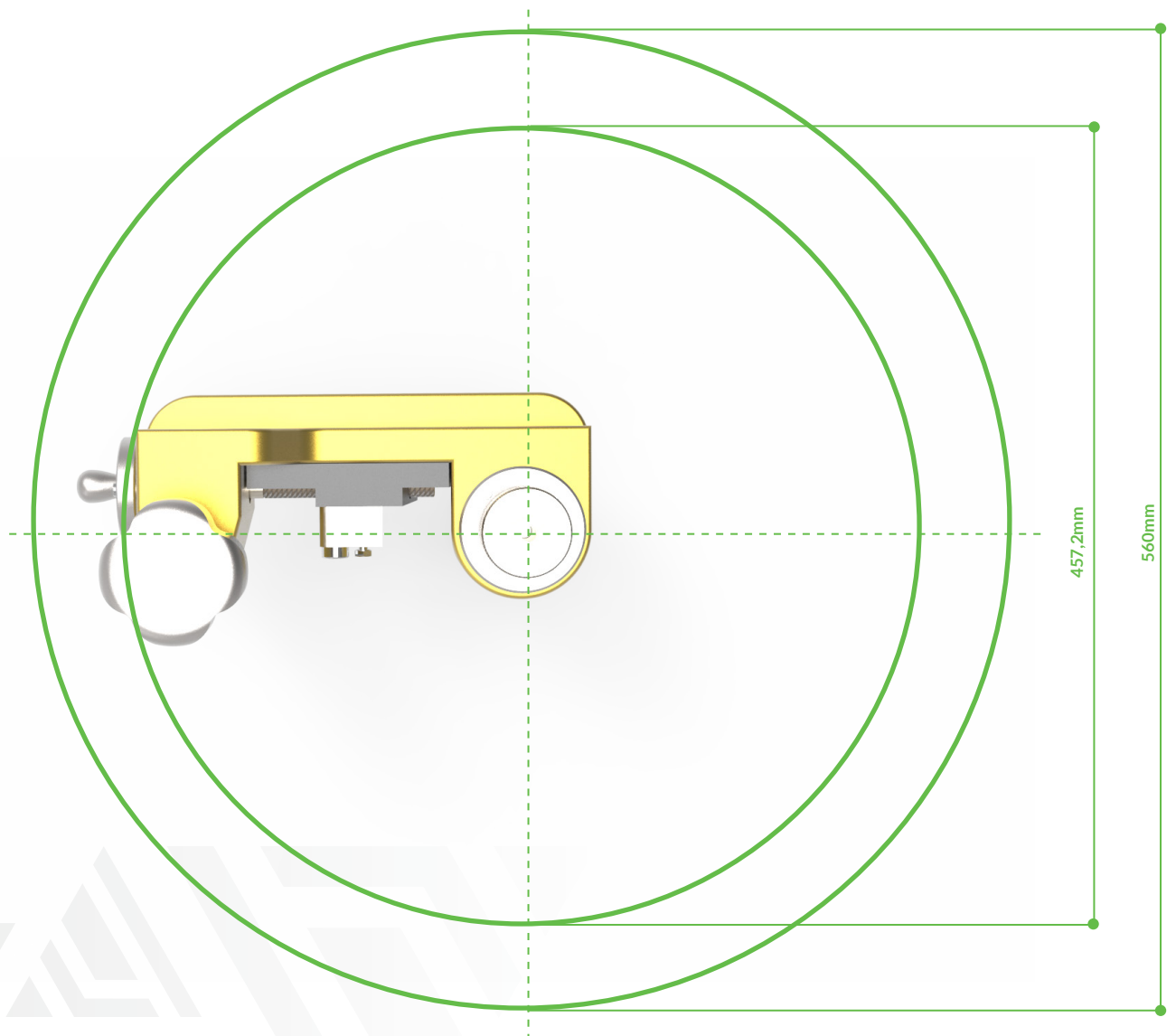
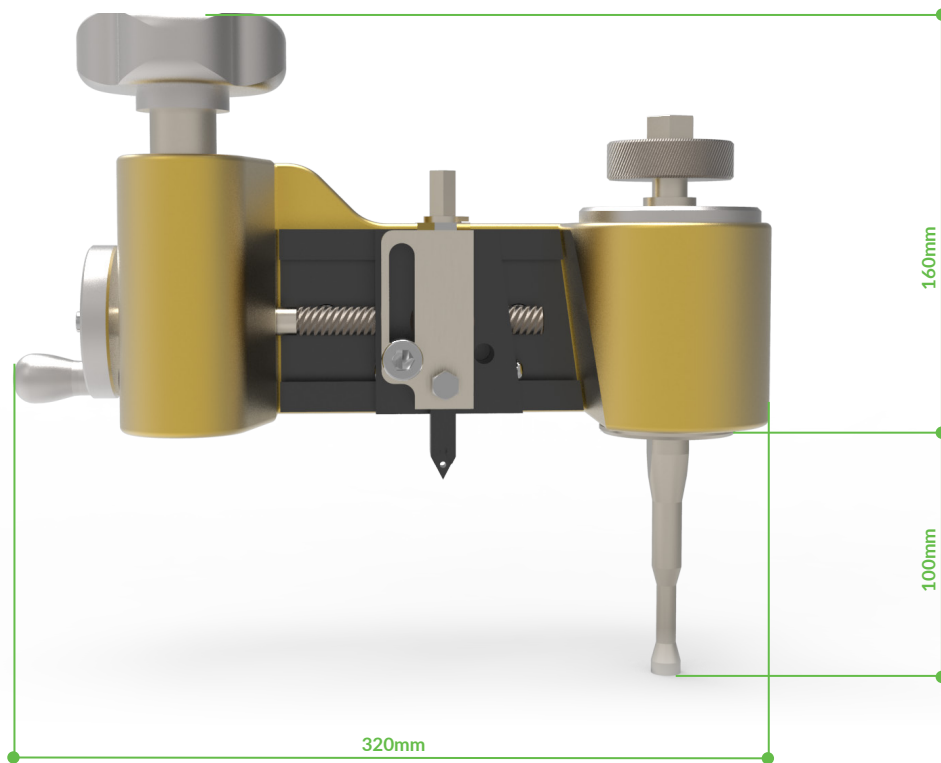
| | |
|---------------------------------|-----------------|
| Case Dimensions | 57 x 44 x 26 cm |
| Total Case Weight | 15kg |
| MiniFacer Weight (ready to use) | 6,5kg |
| Overall Length Machine | 340mm / 13,5" |
| Height from Flange Face | 200mm / 8" |
| Min. Swing Diameter | Ø 460mm / 18" |

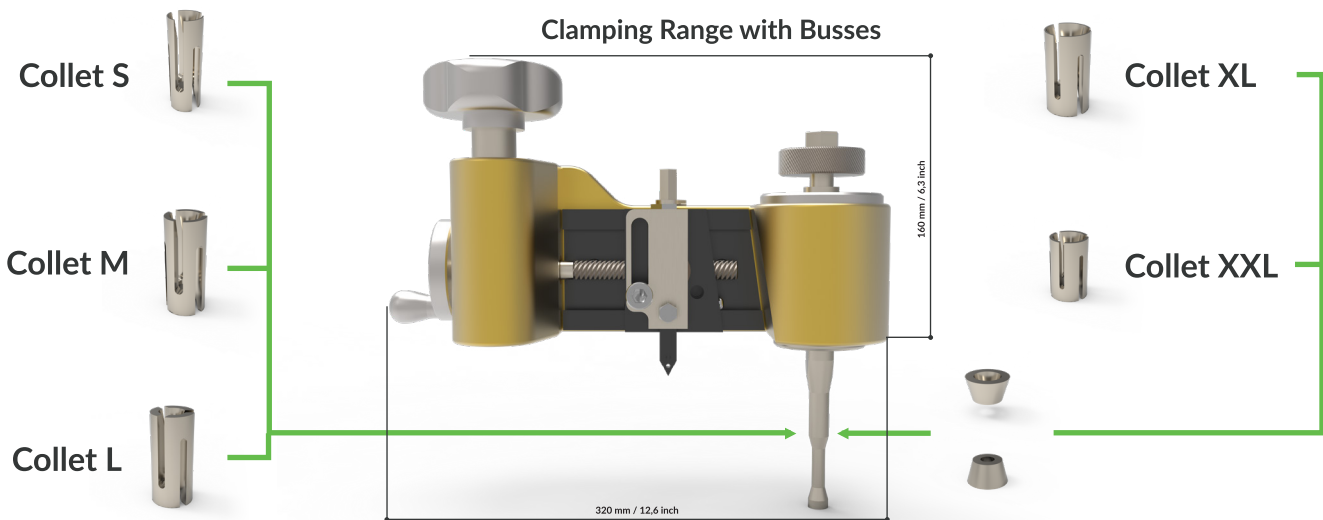
Completed With:

- Toolkit
- Mounting Clamps
- Case
- CE Certificate
- Screws
- Manual



Dimensional Data





Collet Sizes

| | Min | Max |
|-------------------|----------------------|----------------------|
| Small | Ø 13,5mm Ø 0,531" | Ø 16,5mm Ø 0,649" |
| Medium | Ø 16,5mm Ø 0,649" | Ø 19,5mm Ø 0,767" |
| Large | Ø 20,5mm Ø 0,807" | Ø 23,5mm Ø 0,925" |
| Extra Large | Ø 24mm Ø 0,944" | Ø 27mm Ø 1,062" |
| Extra Extra Large | Ø 27,5mm Ø 1,082" | Ø 30,5mm Ø 1,181" |

Case Content



1. Toolpost
2. DIN912 - M10 x 35
3. Hammer
4. Collets
5. Allen Key 8
6. Cones
7. Cutting Tips
8. Cutting Tool Neutral
9. Cutting Tool 90° RH
10. Ring Spanner 10mm
11. Ring Spanner 19mm
12. Body
13. Slide Chart