

The customizable compact drilling machine delivers high-torque performance to drill more holes in less time!



Our family of customizable **Compact Drilling Machines** is ideal for machining applications that call for drilling holes up to 2.5 inches (63.5 mm) in a single pass, step drilling or roto-broaching up to 4.5 inches (114.3 mm) and back-spot facing up to 5.2 inches (132.1 mm). This machine meets tight side clearances which require holes to be within 2.5 inches (63.5 mm) of an obstruction with overhead clearances as low as 15 inches (381 mm).

When there is no adequate solution, operators are forced to use an improvised corner drill for their application. This results in increased labor to do the job (sometimes 2-3 more labor hours), and can also present several issues including:

- Finding a way to safely restrain the drill torque
- Welding-in supports to hold the drill vertically during the drilling operation
- Needing to use a hex nut, screw and wrench to feed the drill through the hole
- Needing to step drill even holes less than 2.5 inches (63.5 mm) in diameter while working within tight spaces
- Addressing safety issues as a result of increased likelihood of operator injury due to poor working ergonomics

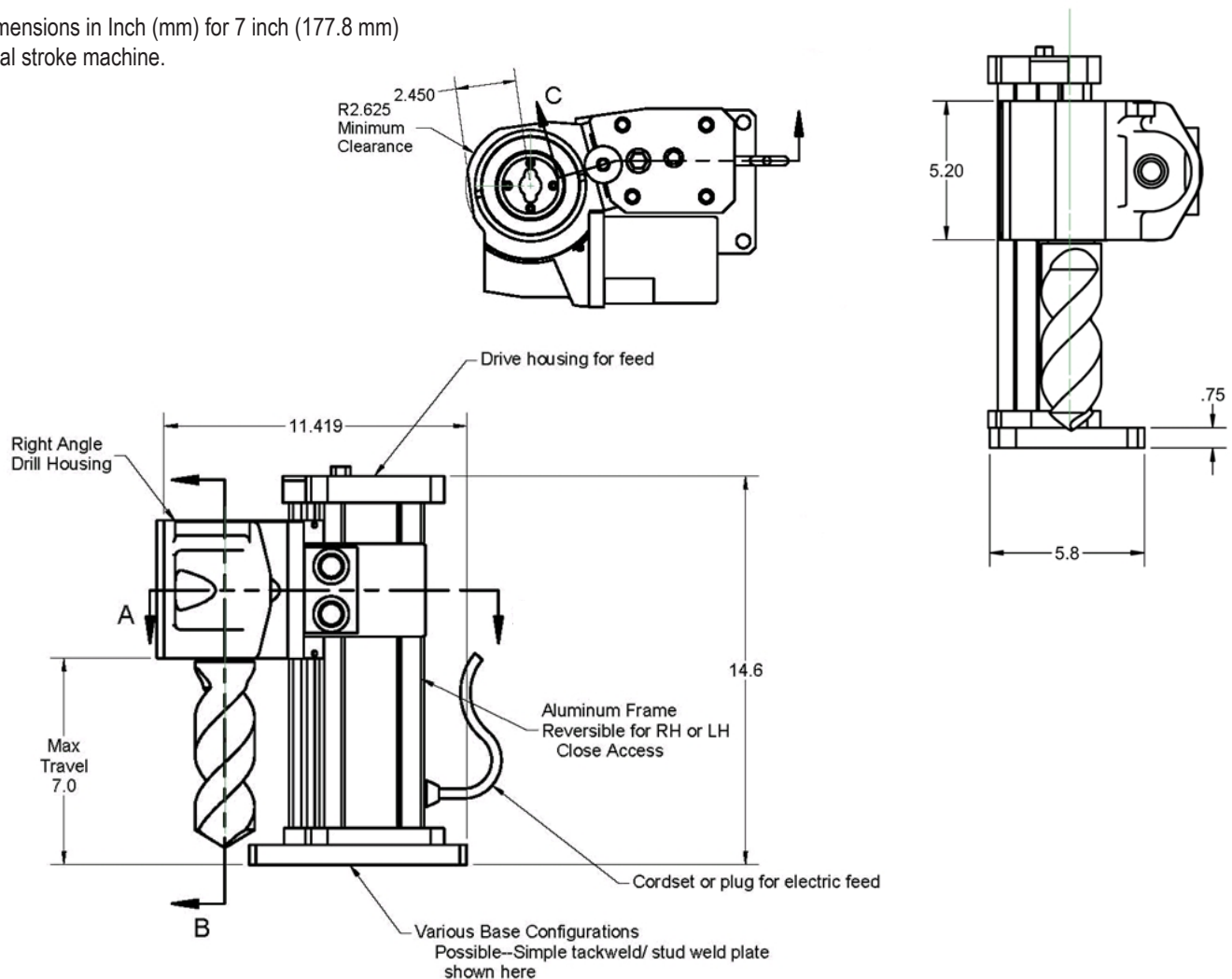
The Compact Drilling Machine gives the operator a safer, more ergonomic solution for their drilling application while also improving their time on the job 30% to 60%.

SPECIFICATIONS

	INCH	METRIC
Machine Performance Ranges		
Capacity		
Drilling	2.25 inches in a single pass	57.2 mm in a single pass
Rotobroach	4.5 inches	114.3 mm
Back spot facing	5.1 inches max	129.5 mm max
Axial stroke range (configurable by application)		
Feed rate	0.3 - 2.5 inches/minute	7.62 - 63.5 mm/minute
Hydraulic Drive System		
Max drill speed	260 rpm @ 10 gpm with 2.2 inch ³ motor	260 rpm @ 37.9/min with 36.1cm ³ motor
Max torque	424 ft-lb @ 1600 psi	574.9 N•m
Overall gear reduction	4:1	4:1
Measurements (based on 7" axial stroke machine)		
Overall dimensions (H x L x W)	14.6 x 11.42 x 7.8 inches	370.8 x 290.1 x 198.1 mm
Drill weight, approximate	50 lbs	22.7 kg

DIMENSIONAL DRAWINGS

Dimensions in Inch (mm) for 7 inch (177.8 mm) axial stroke machine.



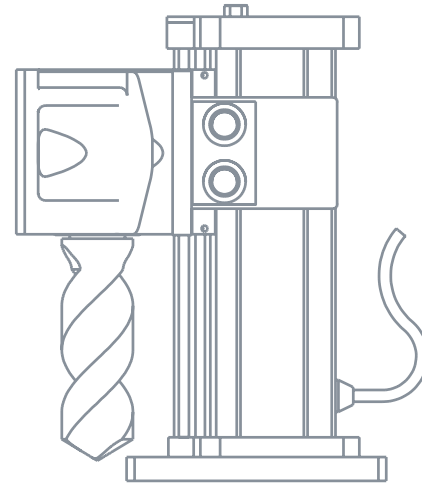
All dimensions should be considered reference. Contact your CLIMAX Representative for precision dimensions. Specifications are subject to change without notice. There are no systems or components on this machine that are capable of producing hazardous EMC, UV or other radiation hazards. The machine does not use lasers nor does it create hazardous materials such as gasses or dust.

TOOL CONFIGURATIONS

Contact your CLIMAX representative to configure your customized compact drilling machine.

AVAILABLE ACCESSORIES

Accessory	Part Number
Coolant Mister (supplies cooling mist directly to the cutting edge through the Rotary Coolant Adapter.)	56524
Mister with fittings for Rotary Coolant Adapter	60283
New-Lube Coolant Coolant for mister, 1 gallon (3.8L)	59804



DRILLING MACHINE MOUNTING OPTIONS



CLIMAX GLOBAL LEARNING CENTER

CLIMAX has been teaching the fundamentals and finer points of portable machine tool operation for more than 50 years.

Whether it's a regularly scheduled course at one of our seven Global Training Centers or a custom curriculum conducted with your team, at your facility, your technicians will benefit from courses developed by the most experienced and respected professionals in the business.

Regularly scheduled courses in basic and advanced tool operation are available. A vast majority of every program is devoted to hands-on activities, skills development, and OEM Certification covering the following subject matters: operator safety, tool component review, setup and mounting, standard and advanced operational techniques, overview of cutting tools and recommended usage, and maintenance procedures. Training is available at the following seven Global Training Centers: Portland, Oregon; Houston, Texas; Gonzales, Louisiana; Wadsworth, Ohio; Manchester, United Kingdom; Düren, Germany, Dubai; and United Arab Emirates. Call us today to schedule training for your team!



Call CLIMAX for:

RENTALS

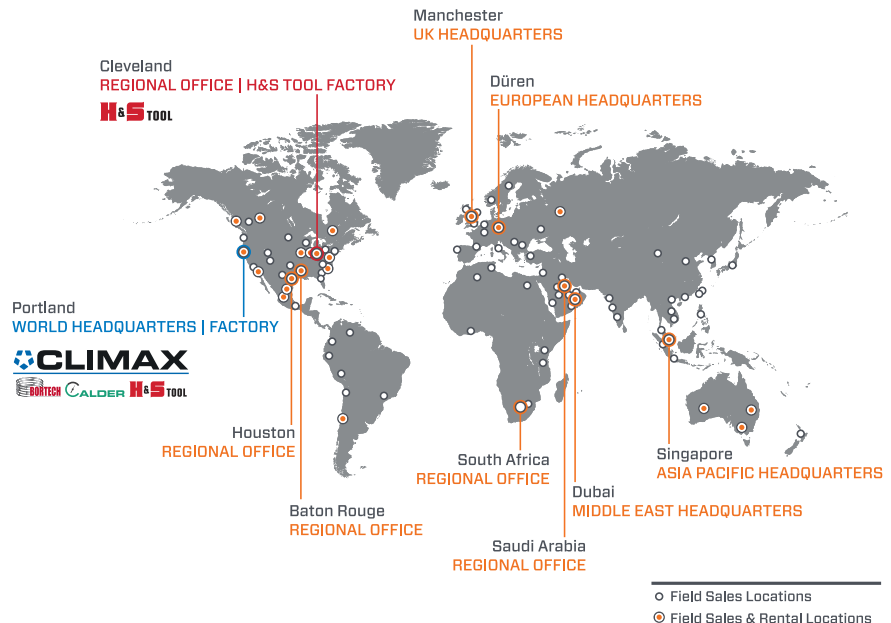
With 20+ worldwide rental depot locations, you are never far away from a CLIMAX tool.

ON-SITE TRAINING

If you need training or on-site consultation, we're famous for it!

CUSTOM PROJECTS

Custom turn-key system design services from the most experienced engineers and portable machining and welding experts!



Connect with us: [f](#) [t](#) [in](#) [g+](#)

World Headquarters

CLIMAX | BORTECH | CALDER Factory
Address: 2712 E. 2nd St, Newberg, Oregon 97132
Tel: +1 503 538 2185
Fax: +1 503 538 7600
Email: info@cpmt.com

Regional Office - Cleveland

H&S TOOL Factory
Address: 715 Weber Dr., Wadsworth, Ohio 44281
Tel: +1 330 336 4550
Email: info@hstool.com

Asia Pacific

Address: 308 Tanglin Rd #02-01, Singapore 247974
Tel: +65 6801 0662
Fax: +65 6801 0699
Email: ClimaxAsia@cpmt.com

European

Address: Am Langen Graben 8, 52353 Düren, Germany
Tel: (+49) (0) 2421 9177 0
Fax: (+49) (0) 2421 9177 29
Email: ClimaxEurope@cpmt.com

Middle East

Address: Warehouse #5, Plot: 369 272, Um Sequim Road, Dubai, UAE
Tel: +971 4 321 0328
Email: ClimaxUAE@cpmt.com

United Kingdom

Address: Unit 7 Castlehill Industrial Estate, Bredbury Industrial Park, Horsfield Way, Stockport SK6 2SU
Tel: +44 (0) 161 406 1720
Email: ClimaxUK@cpmt.com

Copyright © 2018 CLIMAX Portable Machining & Welding Systems. All Rights Reserved. CLIMAX has taken reasonable measures to ensure the accuracy of the information contained in this document. However, CLIMAX makes no warranties or representations with respect to the information contained herein; and CLIMAX shall not be held liable for damages resulting from any errors or omissions herein, or from the use of the information contained in this document.

